

Tibouchina Control and Sanitation in the Northern Ko'olau

Will Weaver
Jordan Lewis
Ko'olau Mountains Watershed
Partnership



Tibouchina Herbacea

Family: Melastomataceae

- **Range:** Tibouchina Herbacea is native to southern Brazil, northeastern Argentina, Bolivia, Uruguay and Paraguay. It was introduced to Hawai'i as an ornamental and was first recorded in 1977, but has been impacting forest ecologies since the 1990s.
- **Distribution:** Heavy infestations on Maui. Occurs in the Ko'olau range on O'ahu and on Moloka'i and Lana'i, in Hilo including lower Saddle Road on Hawai'i.
- **Reproduction:** Flower between late August to January, and seed count is found to be much higher in open sites compared to shaded. Long lived seedbank. Seeds are spread mainly by vector such as birds, rodents, or humans carrying the seed on shoes, clothing articles etc.
- **Ko'olau Distribution:** Tibouchina Herbacea occurs on the Poamoho Summit, Upper Punalu'u, Southern Helemano and downstream in the Paukauila Stream.





The Setting and Challenge



Mahalo Nui loa

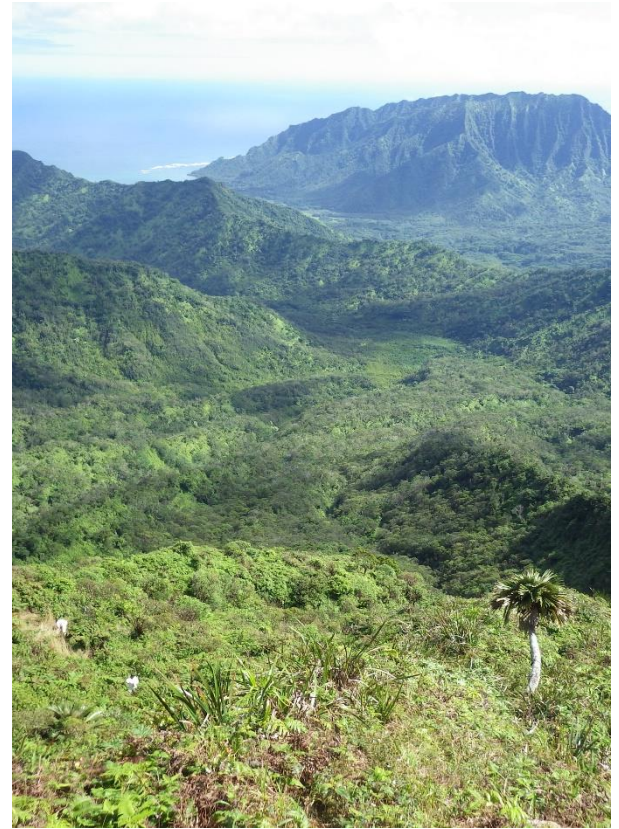
- Multi agency collaboration
- Multiple funding agencies
- Many Tibher champions





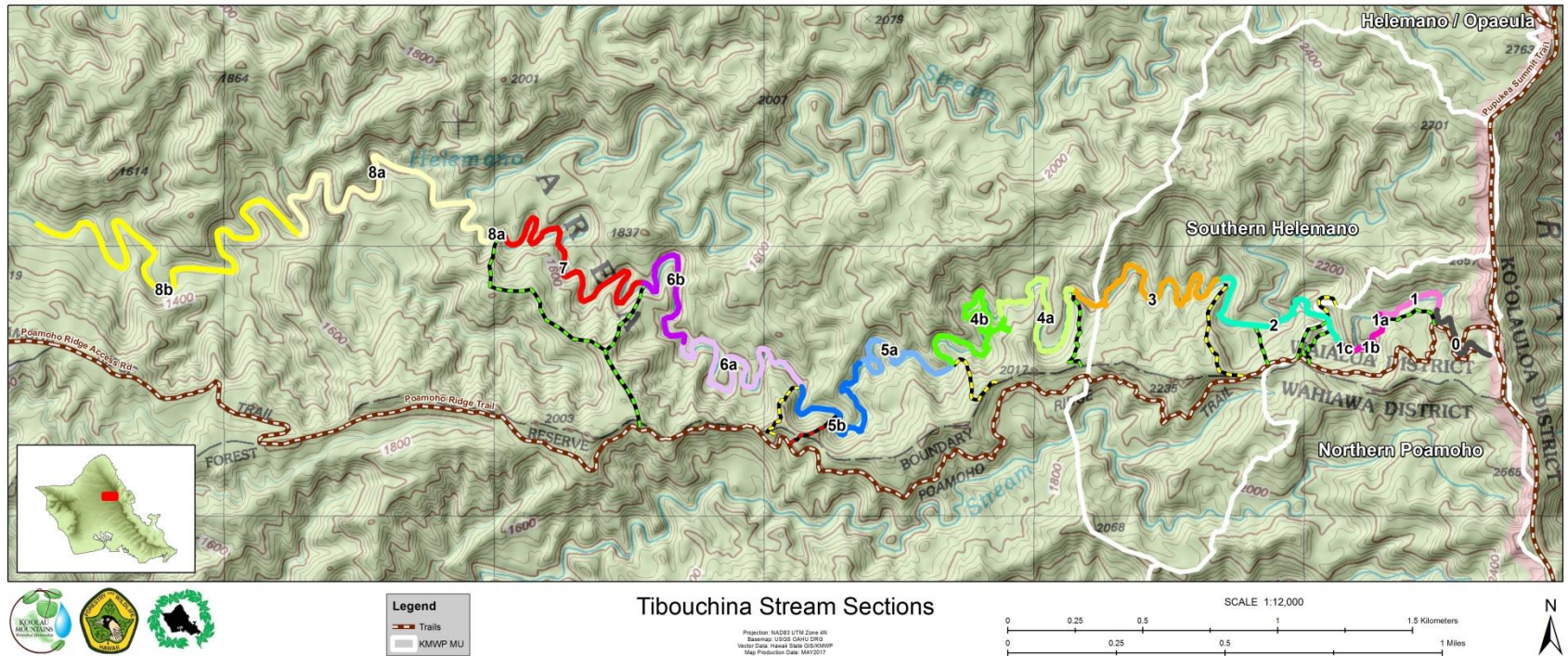


Control and Sanitation Strategy



Control-The Cores

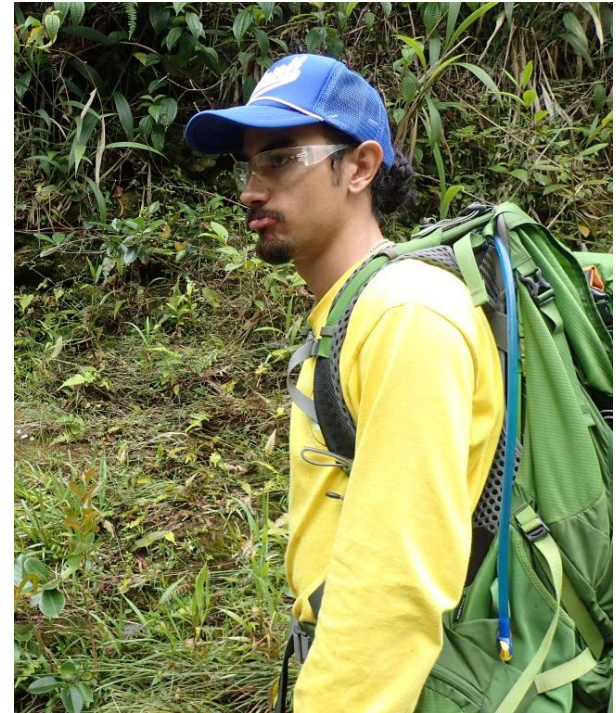
Control-Stream Surveys



- Stream check frequency- Adaptive over time to cover 13,000m in Paukua Stream
- Stream check strategy- Double passes



Control-Stream Surveys



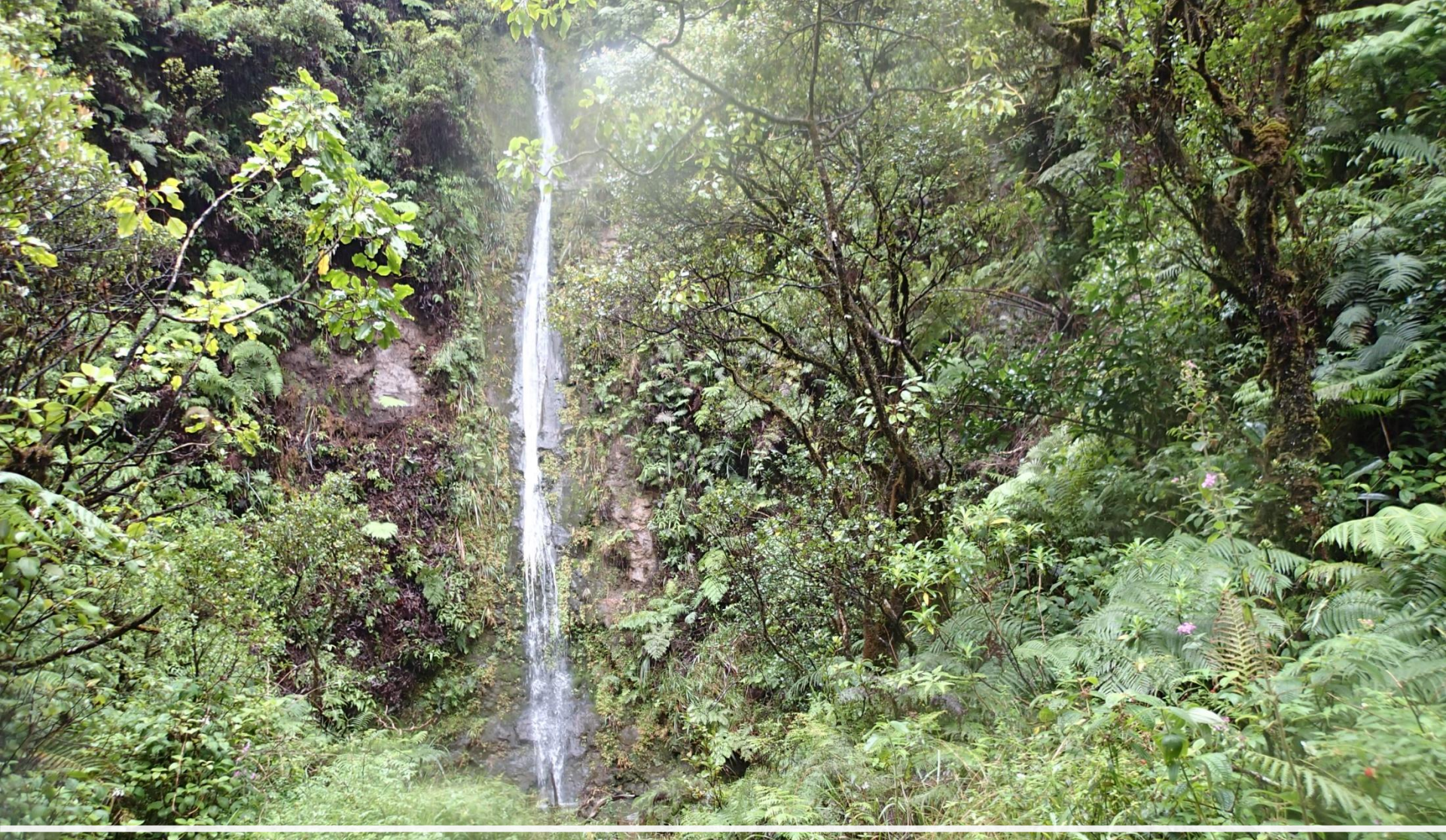


Stream Surveys -Challenges and Fun

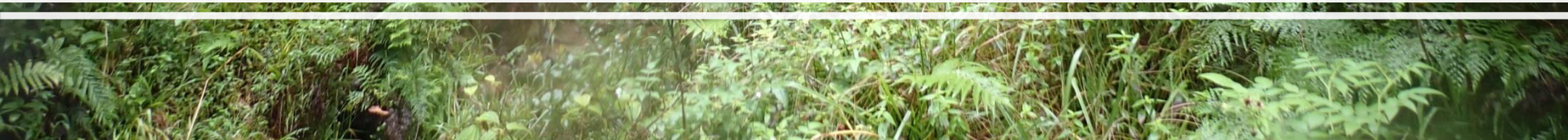


A person wearing a red jacket and a green hat is standing on a steep, grassy mountain slope. They are looking down at a small white object in their hands. A colorful flag is visible on the slope. The background shows a vast, hazy mountain landscape.

[illegible]

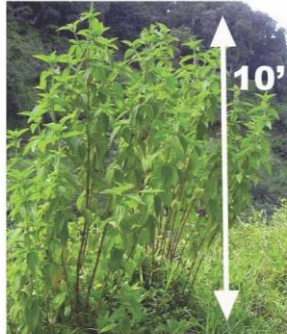


Sanitation



Why is there a boardwalk here?

The boardwalk was installed to protect the native forest that supports the watershed. A highly invasive plant species, the cane *Tibouchina* (*Tibouchina herbacea*) is known in this area and is a high threat to the watershed as it displaces native forest. The cane *Tibouchina* produces thousands of seeds that persist in the soil for many years. The boardwalk was built in an effort to keep hikers from spreading the small seeds along the summit trail.



cane *Tibouchina* (*Tibouchina herbacea*)

Please do NOT pull plants! Instead, report their location for proper removal and disposal. Take a photo and/or GPS point of suspected plant and email them to koolaupartnership@gmail.com or call (808) 453-6110 to report a sighting



- In March, 2017 a 400 foot composite material boardwalk was constructed along the Ko'olau summit trail within the *Tibouchina* summit core area. Built to keep hikers from moving seeds along the trails.

Sanitation- Core



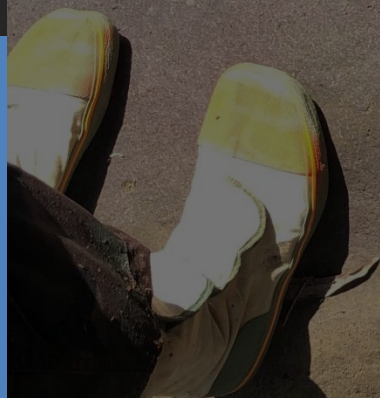
Sanitation- Tibher removal

- Tibher removed from stream and core and taken to H-Power





Sanitation- Tibher Tabis



Sanitation-Decon at Base





REPORT INVASIVE SPECIES
643-PEST
643pest.org
CALL OR CLICK TO PROTECT HAWAII

[HOME](#)[MORE INFORMATION](#)[GET 643-PEST APP](#) ▼[643-PEST RMS LOGIN](#)

Submit a report using this form to alert the 643Pest Network of new pest sightings in Hawaii. 643pest.org (and the 643-PEST telephone hotline) are services provided by the State of Hawaii to help direct pest reports to the appropriate responding agency working with the state on invasive species issues.

Provide as many details as possible to help us assess your report, including related images and location details (using the map below). **If you are reporting an insect, try to preserve a physical specimen (frozen) for identification purposes.** You will receive an email confirming the pest report submission. In addition, a representative of the 643Pest Network may follow-up with you to clarify submitted information, acquire additional information or provide feedback. This report may be sent to a local invasive species expert for identification or referred to the responsible invasive species management agency if the pest is suitable for a response action. **To submit a report by telephone, call 643-PEST (643-7378). Mobile device users can [download](#) and submit reports using the 643-Pest application.**

IF YOU HAVE OBSERVED AND ARE REPORTING A SNAKE, CONTACT THE POLICE AT 911 IMMEDIATELY!

REPORTER INFORMATION

Report Number:

T03102020115025

First Name:

Last Name:

Email:

e.g. pestreport@643pest.com

Phone:

e.g. 808-123-4567 or 8081234567

PEST SIGHTING INFORMATION

NOTE: Asterisk [*] and red label color indicate a required field.

Date of Pest Sighting:**Pest Name:**

(Maximum Length = 50 Characters)

***Pest Description:**

(Plant: size; flower, foliage, or fruit color / scent / orientation; habitat)

(Insect / animal: size; color; plant / host found on or nearby; habitat)

***Island of Pest Sighting:**

(Please choose an Island before entering information into the Location field).

--Select Island--

Location of Pest Sighting:

(Street address, cross streets, city, mile marker, place name or general area)

Additional Comments:

Image Upload (Allowed File Types: .jpg, .png, .gif | Upload up to 3 images):

Next Level Discussion Points

- Sanitation station when leaving boardwalk core
- Core and stream specific tibher footwear
- More permanent signage at the boardwalk
- Poamoho trail entry signage

Mahalo!

