



*Decontamination Protocol
for Ceratocystis. spp.*



A low-angle photograph of a tree with dense green foliage and clusters of small red flowers. The tree is positioned on the left side of the frame, with its branches extending towards the right. The background is a clear, bright blue sky. The text "How Can You Help?" is overlaid on the right side of the image in a white, italicized font.

*How Can
You Help?*

RAPID 'ŌHI'A DEATH

1) Don't move 'ōhi'a wood or 'ōhi'a parts.



***"If you never was
when seen um, mo
betta if you leave um"***





***2) Don't
transport
'ōhi'a
interisland.***



***"No even try
for let da
ROD fly!"***

RAPID 'ŌHI'A DEATH



3) Avoid injuring 'ōhi'a.



"False crack ROD attack"

4) Clean gear and tools, including shoes and clothes, before and after entering forests.



“Clean your stuffs bumbai da foress goin buss”

RAPID 'ŌHI'A DEATH

5) Wash your vehicle with a high pressure-hose or washer if you've been off-roading or have picked up mud from driving.



“Wash yo car bumbai da stuffs going travel far”

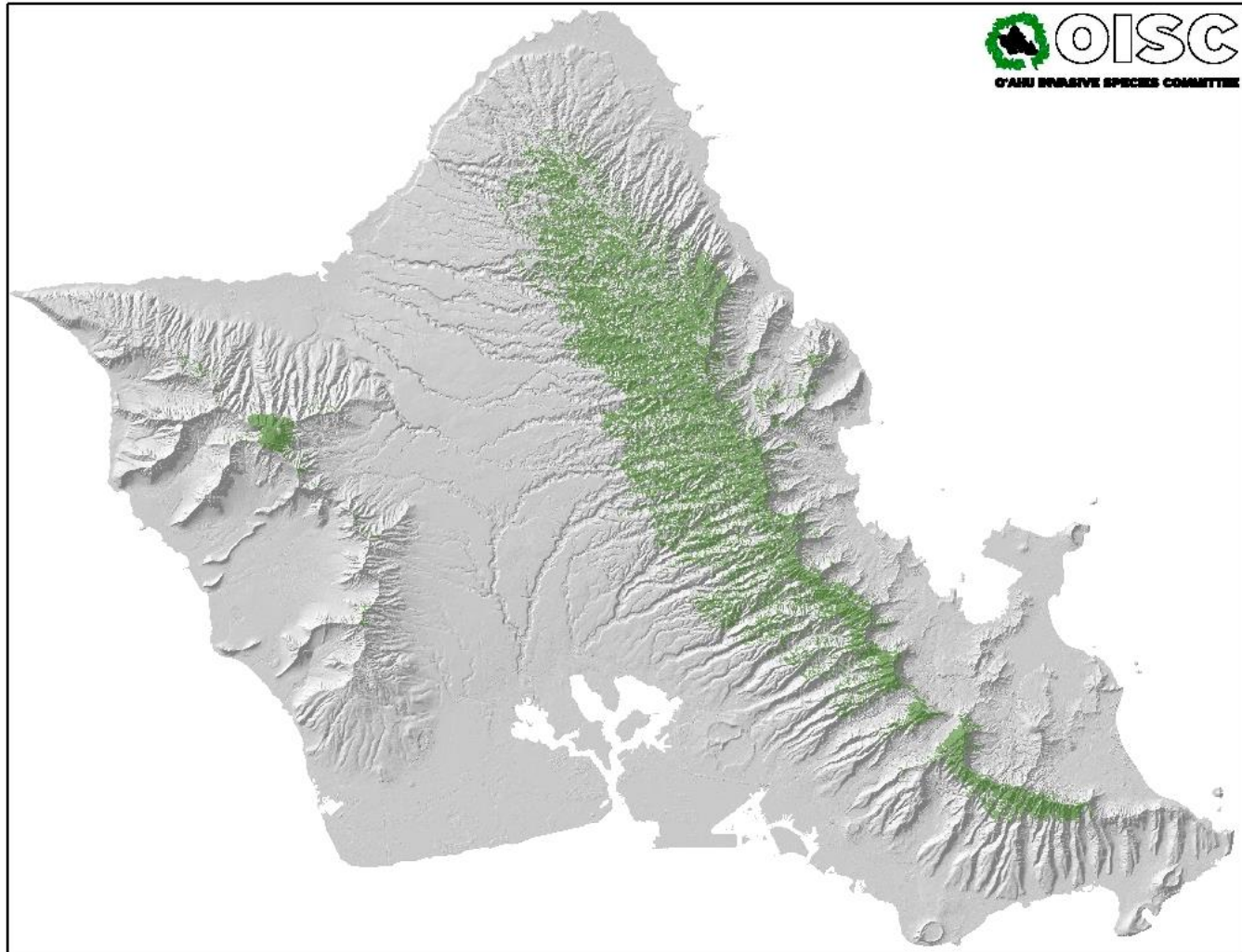


**RAPID
'ŌHI'A
DEATH**

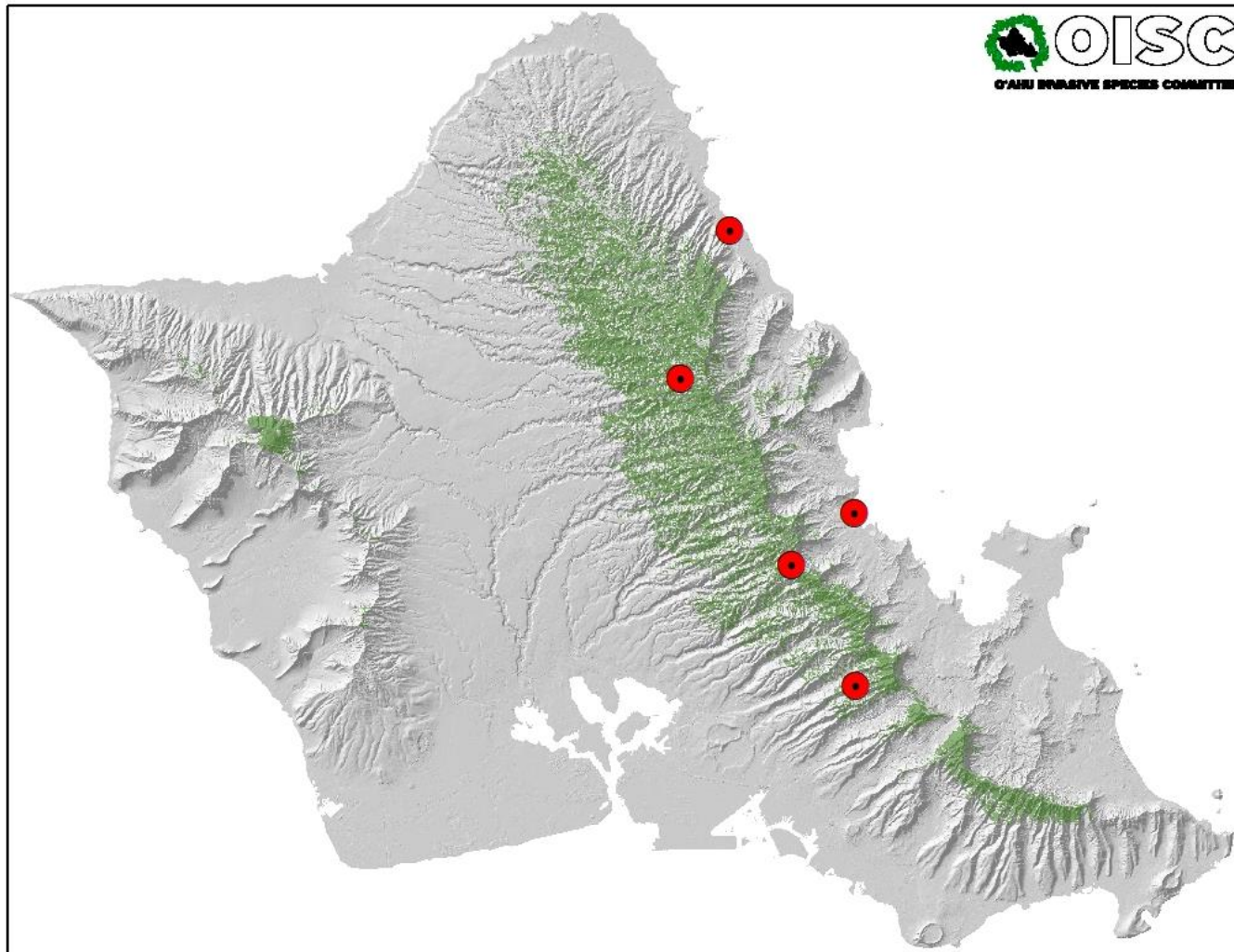
Rapid 'Ōhi'a Death in the Landscape



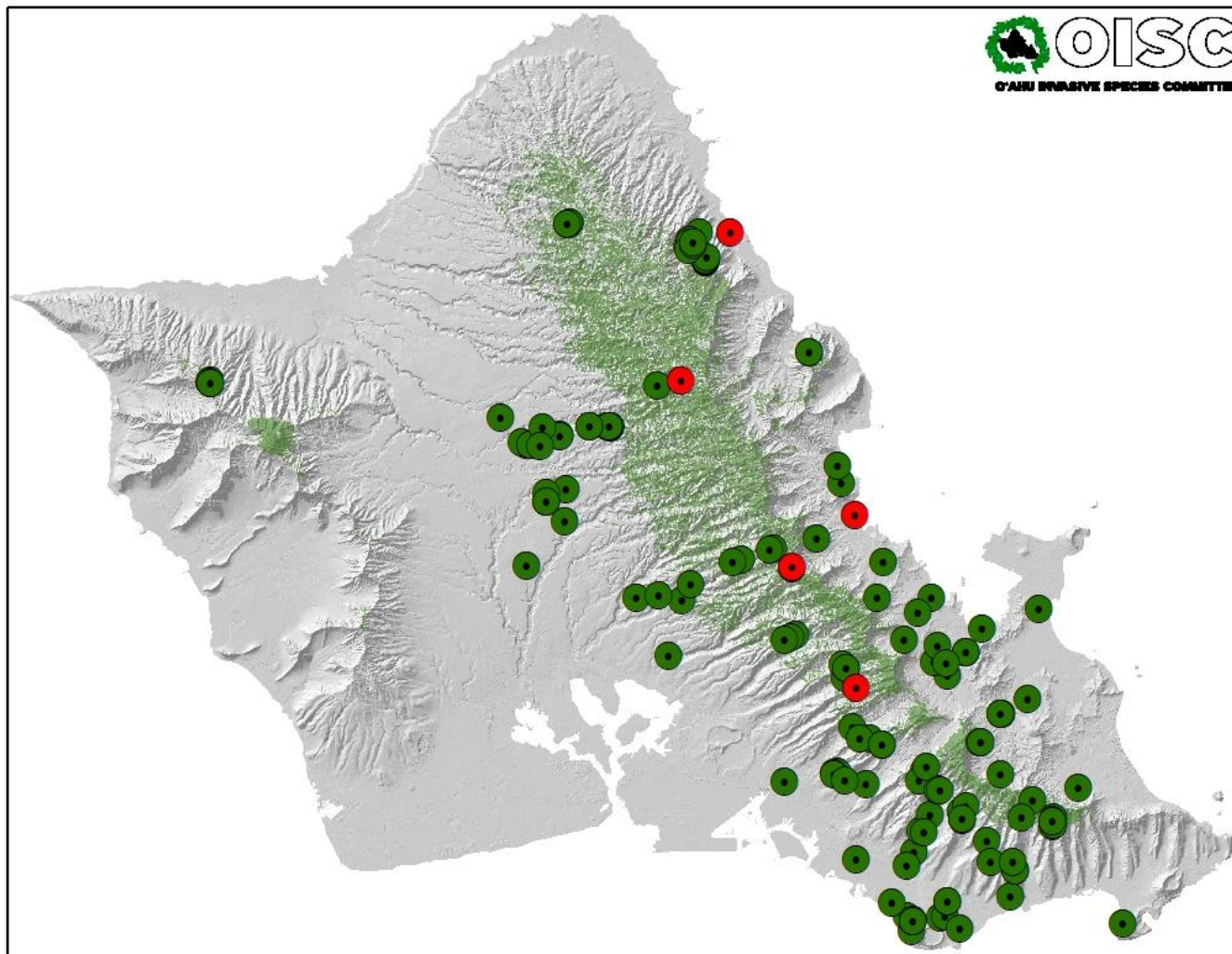
Current Distribution of 'Ōhi'a Across O'ahu



Current Distribution of C. huliohia Across O'ahu



OISC Sampling Efforts Across O'ahu



What Do You Need?

- 70% Isopropyl Alcohol **OR** 10% ***freshly mixed*** Bleach/Water Solution
- Spray Bottle
- Stiff Bristled Brush(es)
- Water



Boots and Gear

Boots

- *Thoroughly scrub/wash all visible dirt, plant material, etc. from boot surfaces.*
- *Spray with 70% (or higher) rubbing alcohol or freshly mixed 10% bleach solution.*



Gear

- *Thoroughly scrub/wash all visible dirt, plant material, etc. from boot surfaces.*
- *When possible, change clothes between sites and before entering the helicopter*

Decontaminate Cutting Tools

WHAT WORKS:

- 70% isopropyl or ethyl alcohol for 15 seconds
- 10% chlorine bleach (freshly mixed)

What does NOT work: Simple Green



Clean Vehicles

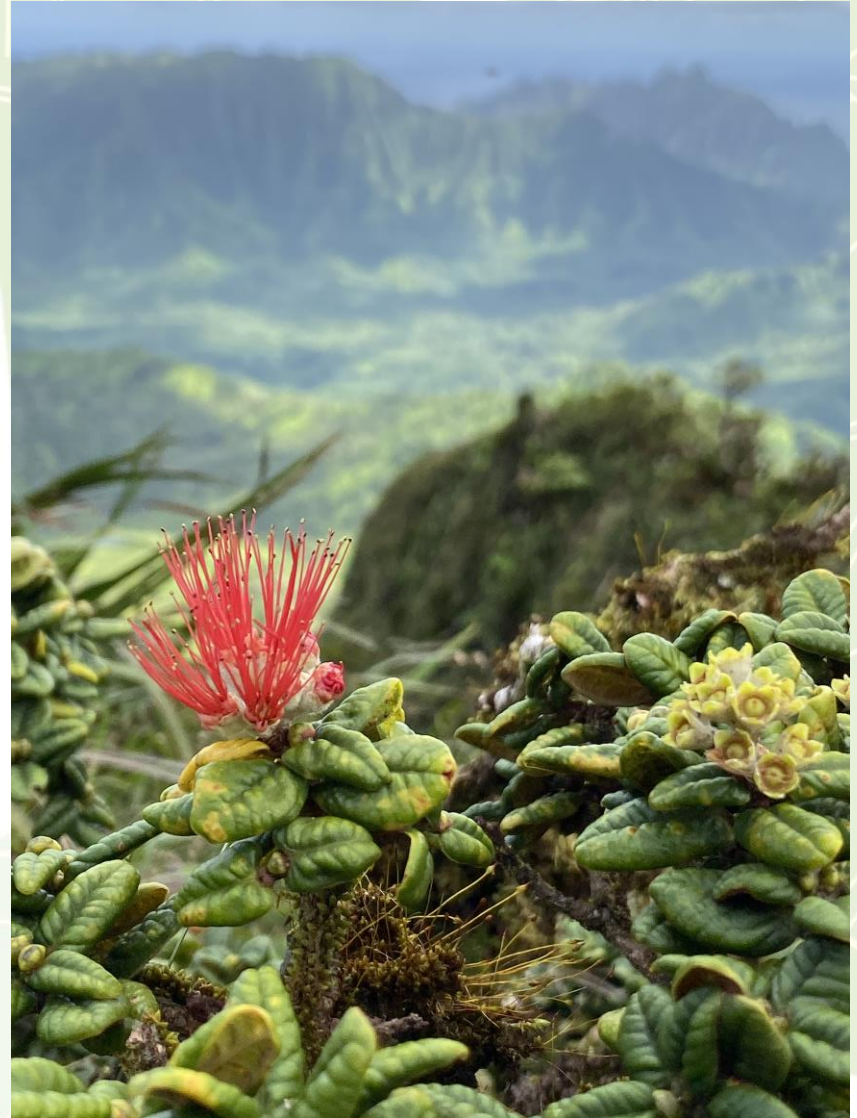
- *Tires, wheel wells, undercarriage*
- *Remove all soil and mud*



- *Sweep, vacuum, and spray all floor mats and seats*

Considerations

- *When working in and around 'ōhi'a, be sure to decon and take care to not damage trees*
- *Need to prevent spread of C. lukuohia to O'ahu and prevent spread of C. huliohia on O'ahu*
- *This will protect our endemic species*
- *Don't know how the fungi affect endemic O'ahu species, so should take extra precautions*
- *"An ounce of medicine prevents a pound of pain"*



Questions?

