



Control of *Chromolaena odorata*:

A Bedeviling Problem

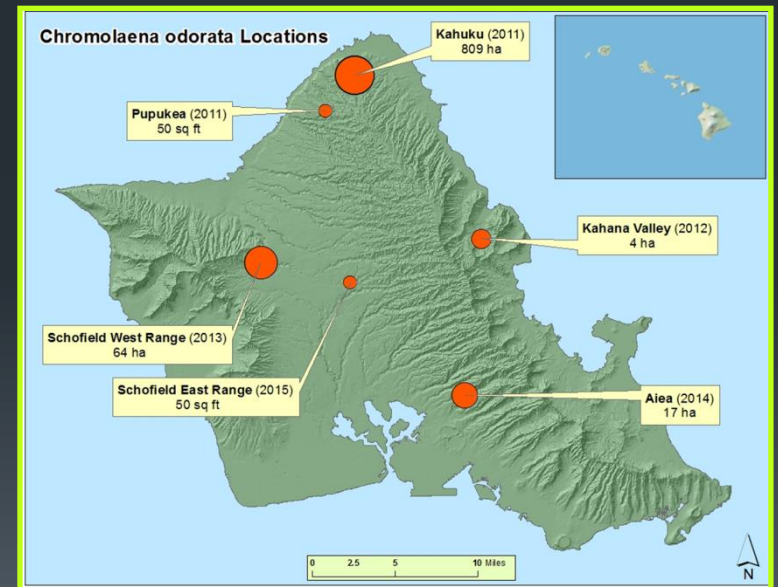
ChrOdo Overview

- Native Range
- Habitat (Prime vs. Poor)
- Growth habit & Reproduction
- WRA Score: 28 (High Risk)
- Potential Hawaii Introduction



OISC Control Sites

- Kahuku Training Area
- Ahupua'a O Kahana State Park
- Camp Smith
- Keaīwa Heiau State Park
- Pūpūkea Coastal/Residential
- Keamanea Watershed

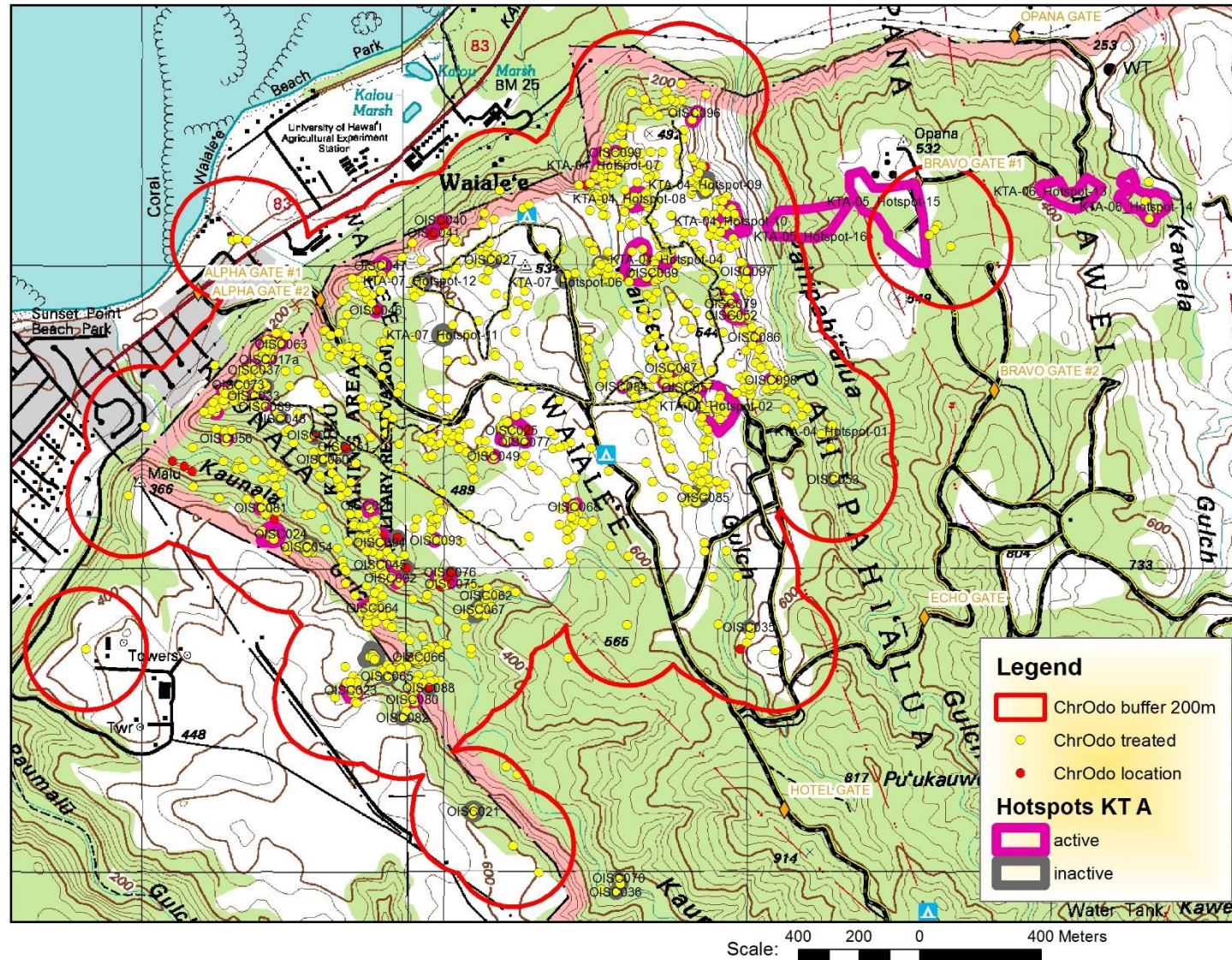


This Map shows the general locations of *Chromolaena* known on Oahu. The size of the dots represents the population size (number of plants found to 2015) with the Army's Kahuku Training Area as the largest infestation.

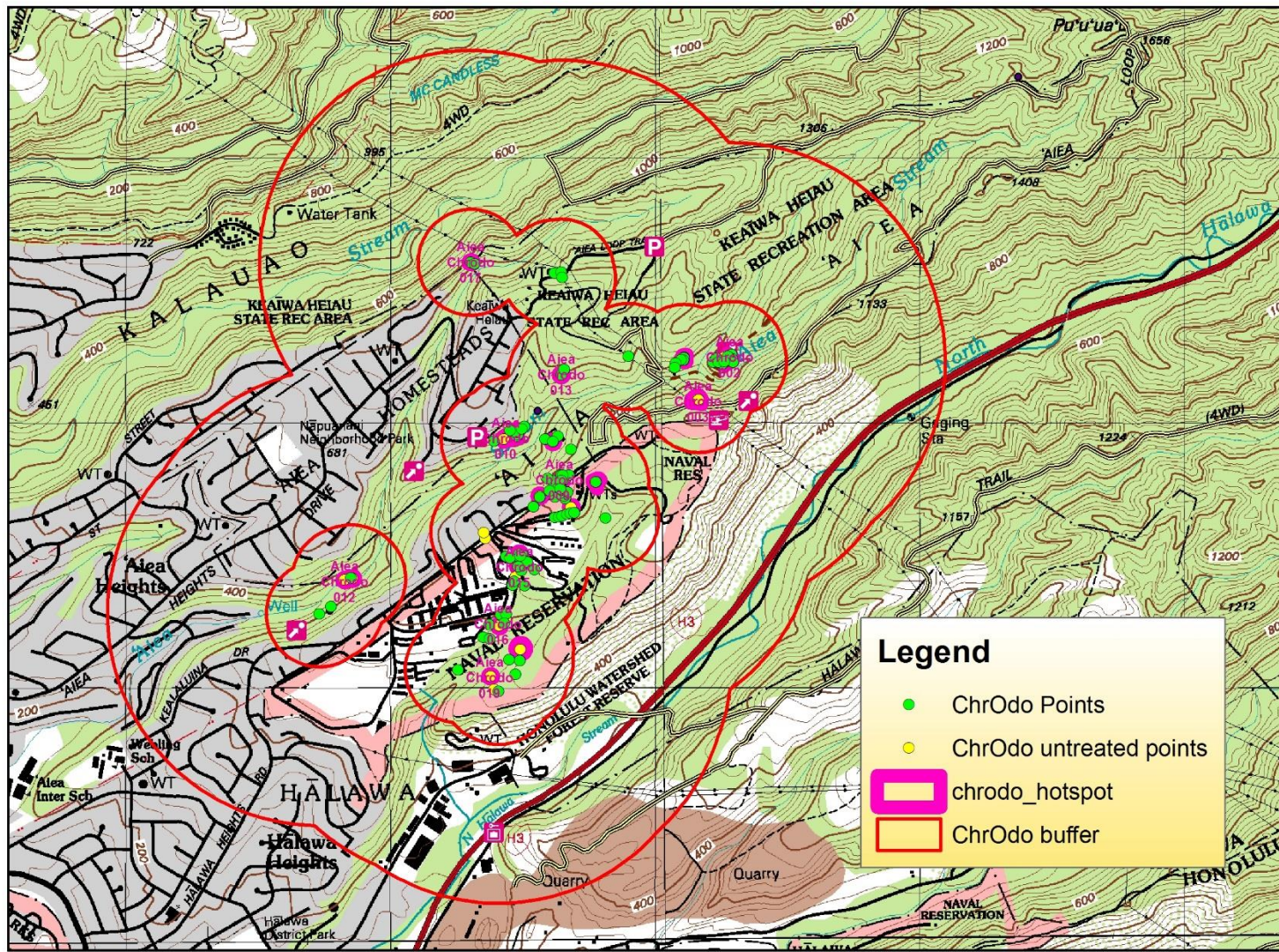
O'ahu Detection Timeline



Kahuku Training Area (KTA)

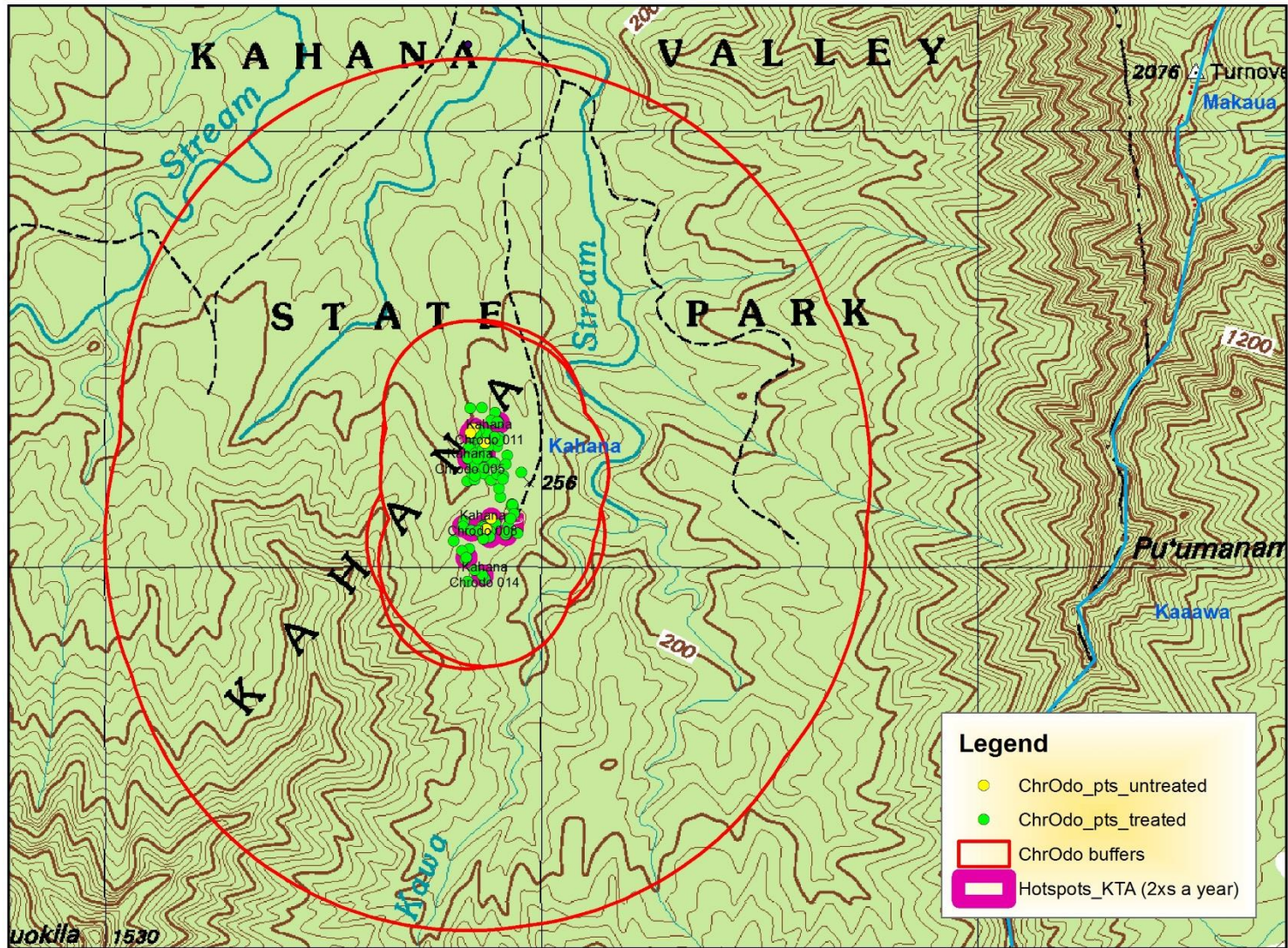


Aiea



Scale: 480 240 0 480 Meters

Kahana



Scale: 290 145 0 290 Meters

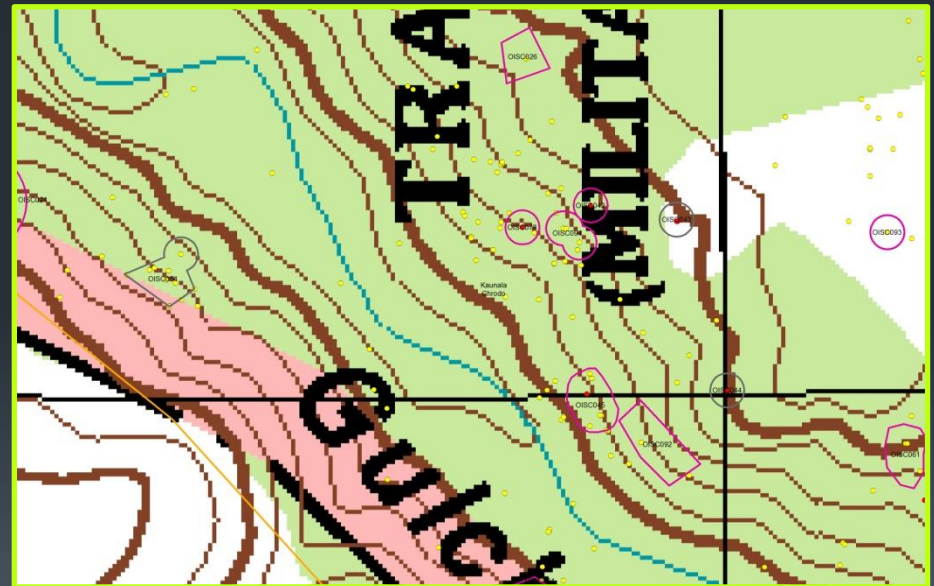
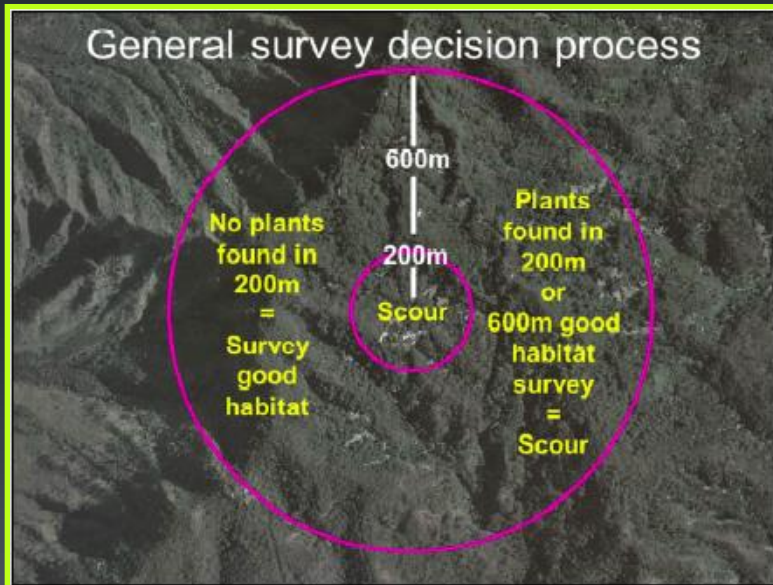
OISC Survey Strategy

- Delimit

- 200 Meter Buffer
- 600 Meter Buffer

- Hotspots

- ≥ 5 Mature Plants
- 10 Meter Radius



ChrOdo Treatments

- Hand pull
- Cut Stump
- Foliar/Drench
 - Power spray vs. Backpack spray



ChrOdo Ops: Acheivements

- 2014
 - 1473 acres surveyed; 5268 plants treated; 2108.5 field hours
- 2015
 - 3873 acres surveyed; 11,875 plants treated; 3,659.0 field hours
- KTA
- Outreach
 - Groups we have reached
 - Partnerships
- Treatment method (Power-Sprayer)

ChrOdo Ops: Complications



- Decontamination
- Treatment method (cut/stump, pull)
- Survey strategy
- Reaching the public
- New populations, distant areas
- Labor and money
- Surrounding vegetation

ChrOdo Ops: Future Efforts



- Outreach

- Social Media Marketing Campaign
- Connecting target audiences
- Invasive Weed Mobile App
- Motocross Wash Rack

- Fieldwork

- Cross-agency collaboration
- Survey/treatments of known infestations
- Reconnaissance/delimiting for any future populations

Open Floor!



- Experience with new wind dispersed species?
- Survey strategy?
- Better decontamination signage and materials?
 - All state trails?
- Other groups to target for outreach?
- Means to convey urgency for ChrOdo to the broader public?
- Cut-stump regrowth experience?
- Other questions/comments?